

# Hitch Covers

## Item Specs

- 6 shapes and sizes
- Durable black plastic covered with urethane coating
- Snaps into place & is locked in
- Available with 1" or 2" hitch stems
- Printing is domed to create high-quality 3D effect
- 1-4 color process printing



*Protect your Hitch & Advertise your Business!*

## Standard Background Colors (All swatch colors are approximate representations.)



## Available Styles



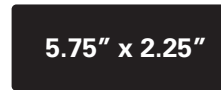
Style A



Style C



Style D



Style F



Style G



Style H

## Art Requirements

Fully editable vector artwork with all fonts converted to curves or high resolution (300 dpi) raster. Copy and desired text layout. Any graphics must be vector or at least high resolution (300 dpi) raster. Typeset charges may apply.

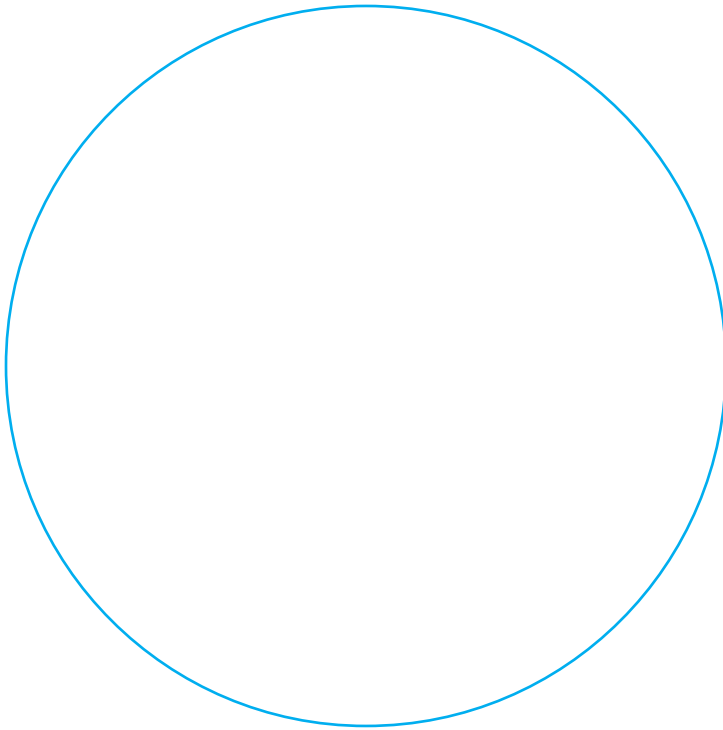
## Additional Information

<b>Standard Background Colors:</b> White, Mirror Silver, Mirror Gold, Brushed Chrome, Brushed Gold		<b>Standard Ink Colors:</b> Any
<b>Non-Standard Ink Colors:</b> NA	<b>Proof Charge:</b> Up to 3 Free	<b>Screens &amp; Gradients:</b> Yes (no Addl Charge)
<b>Plate Charge:</b> No	<b>PMS Match:</b> Yes (no Addl Charge)	<b>Bleed:</b> Yes (no Addl Charge)
<b>Blank Hitch Covers:</b> Available upon request		

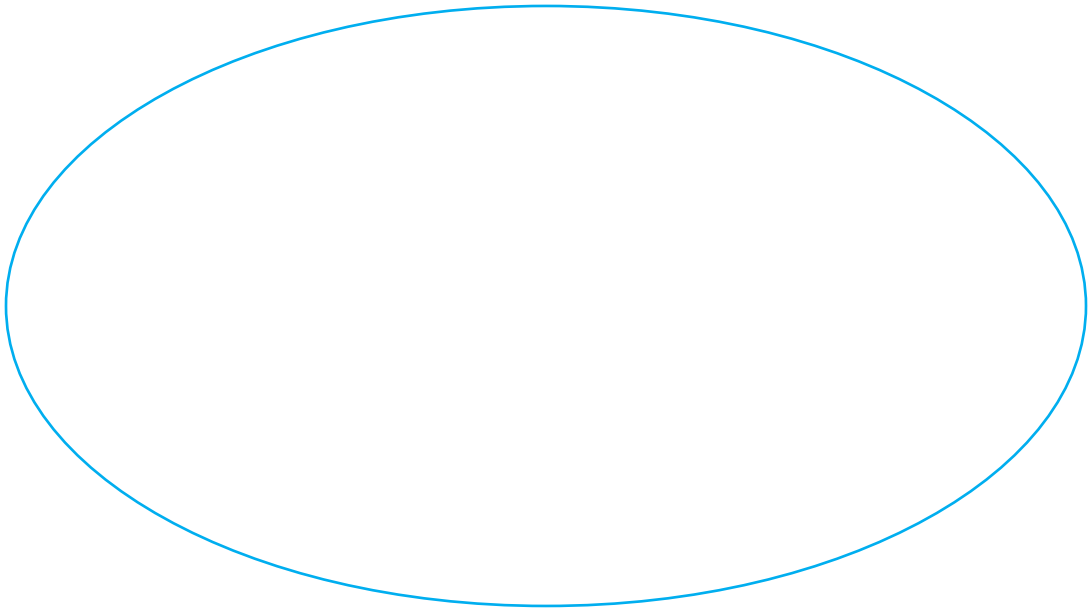
## Production Notes (For Internal Use)

### Production: 095

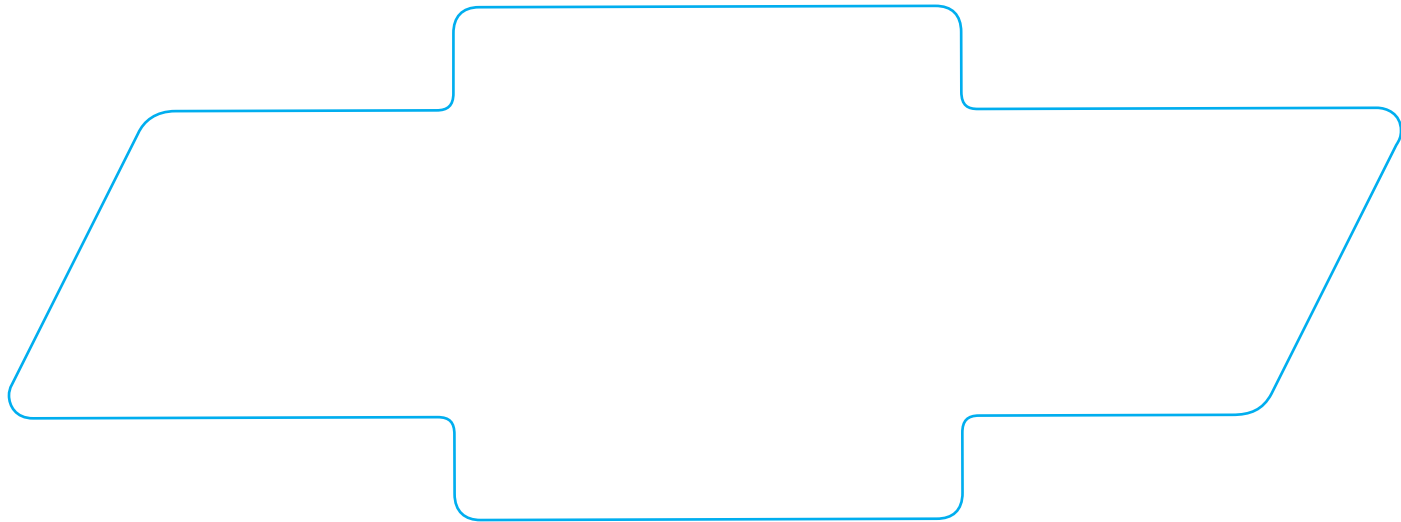
- PDF exported with all fonts outlined.
- Outline all fonts in Illustrator prior to production.



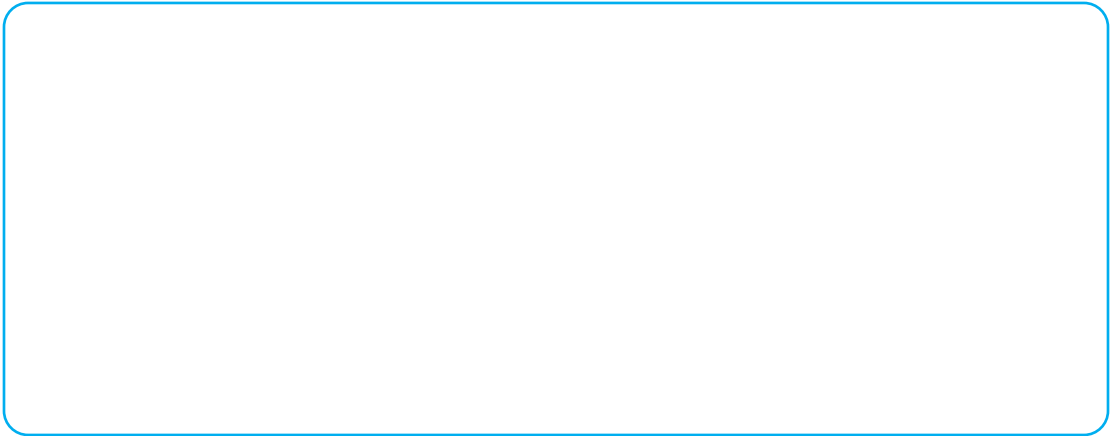
ITEM #4900 - HITCH COVER - STYLE A - 3.75" x 3.75"



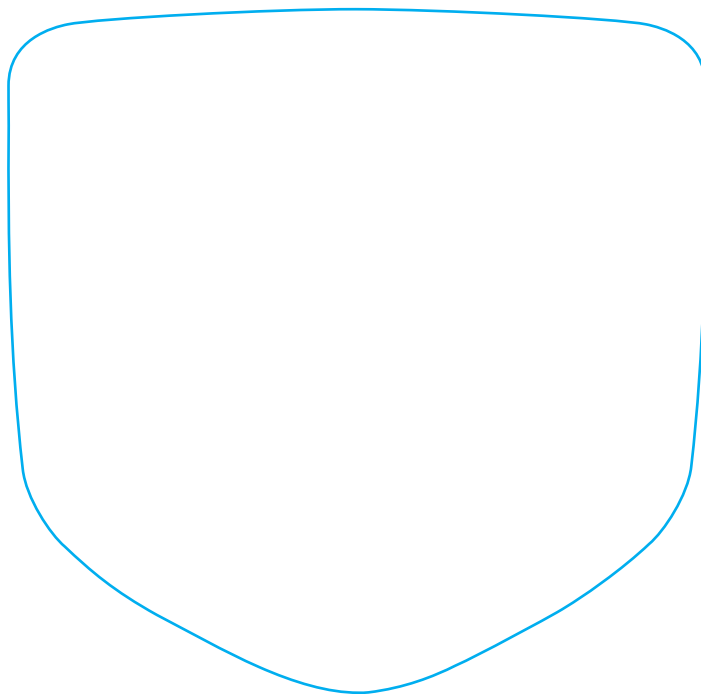
ITEM #4900 - HITCH COVER - STYLE C - 5.625" x 3.125"



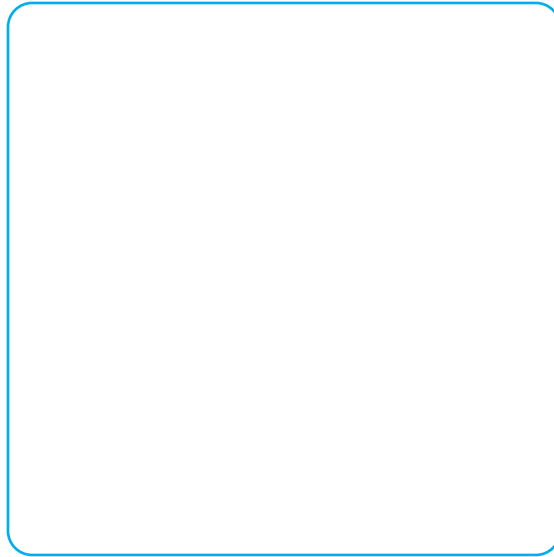
ITEM #4900 - HITCH COVER - STYLE D - 7.25" x 2.678"



ITEM #4900 - HITCH COVER - STYLE F - 5.75" x 2.25"



ITEM #4900 - HITCH COVER - STYLE G - 3.63" x 3.56"



ITEM #4900 - HITCH COVER - STYLE H - 2.875" x 2.875"