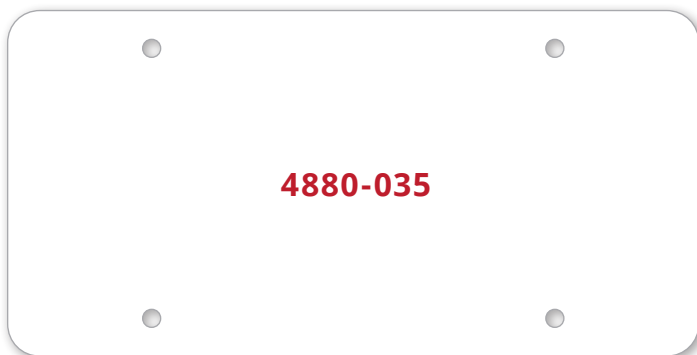
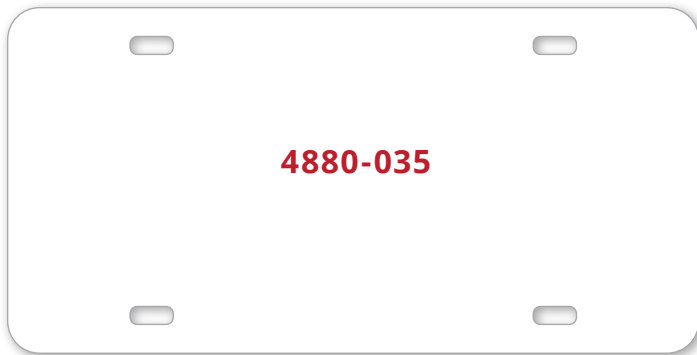


Custom Plastic License Plates

4880-035



Product Description

The most durable and high quality plates available on the market. Plates will not crack, chip, peel, or break.

Product Specifications

- 12" x 6"
- Thicknesses available - 0.035"
- Weather-resistant polyethylene plate
- Up to 5 color screen printing or full color digital printing available
- Quantities: Minimum 125 / Incremental 125

Additional Information

Imprint Area: 12" x 6"

Other Ink Colors: Metallic Gold or Metallic Silver (Addl Charge)

Proof Charge: Up to 3 Free

Plate Charge: No

Screens and Gradients: Yes (digital printing only)

PMS Match: Yes (Addl Charge)

Holes: 4 Holes (Oblong, Round Holes Addl Charge)

Bleed: Yes (Addl Charge)

Standard Plate Color

White

Standard Ink Colors - approximate representation

#1 Off White (PMS 726C)	#2 Brown (PMS 469C)
#5 Light Gray (PMS 420C)	#6 Purple (PMS 267C)
#7 Maroon (PMS 188C)	#8 Hunter Green (PMS 350C)
#9 Reflex Blue (Pantone Reflex Blue C)	#10 Standard Red (PMS 485C)
#11 Orange (PMS 021C)	#12 Teal (PMS 321C)
#13 Peacock Blue (PMS 2935C)	#14 Fuchsia (PMS 226C)
#15 Kelly Green (PMS 348C)	#16 Light Blue (PMS 292C)
#17 Pink (PMS 190C)	#18 Standard Yellow (Pantone Yellow C)
#20 Light Orange (PMS 1495C)	#21 Black (Pantone Black C)
Lime (PMS 361C)	Navy Blue (PMS 281C)
Standard White	

Non-Standard Ink Colors - approximate representation

#3 Metallic Silver (PMS 877C)	#4 Metallic Gold (PMS 871C)
-------------------------------	-----------------------------

Production Notes (For Internal Use)

Production: 140

- PDF exported with all fonts outlined.
- Outline all fonts in Illustrator prior to production.

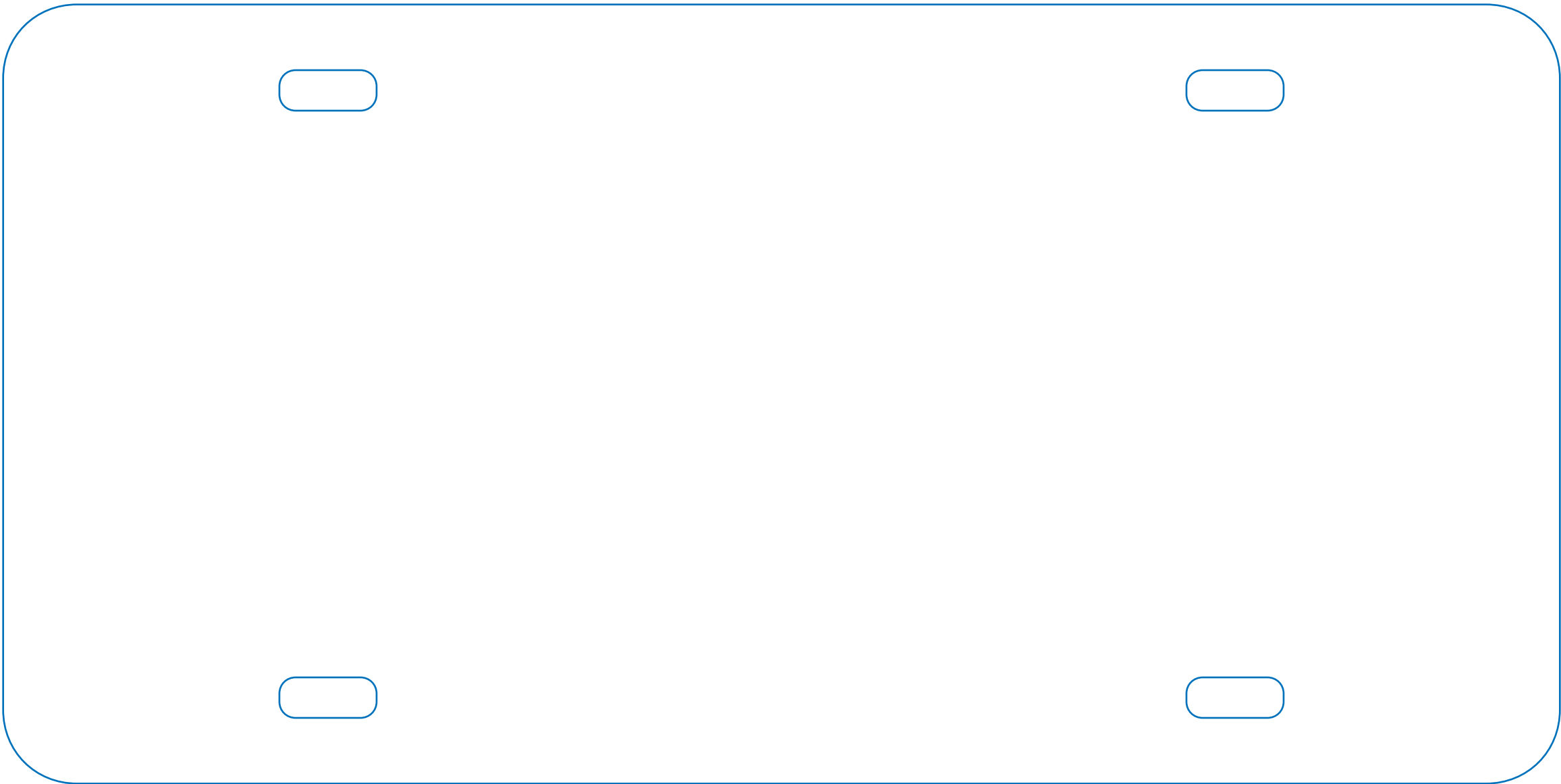
Art Requirements

- High resolution (300dpi) or fully editable vector artwork is required.
- Preferred file formats are InDesign (.indd), Illustrator (.ai or .eps), or Photoshop (.psd).
- If unavailable, artwork can be recreated if one of the following is provided:
 1. Photo/scan of existing artwork
 2. Description of copy and desired layout.

Production Notes (For Internal Use)

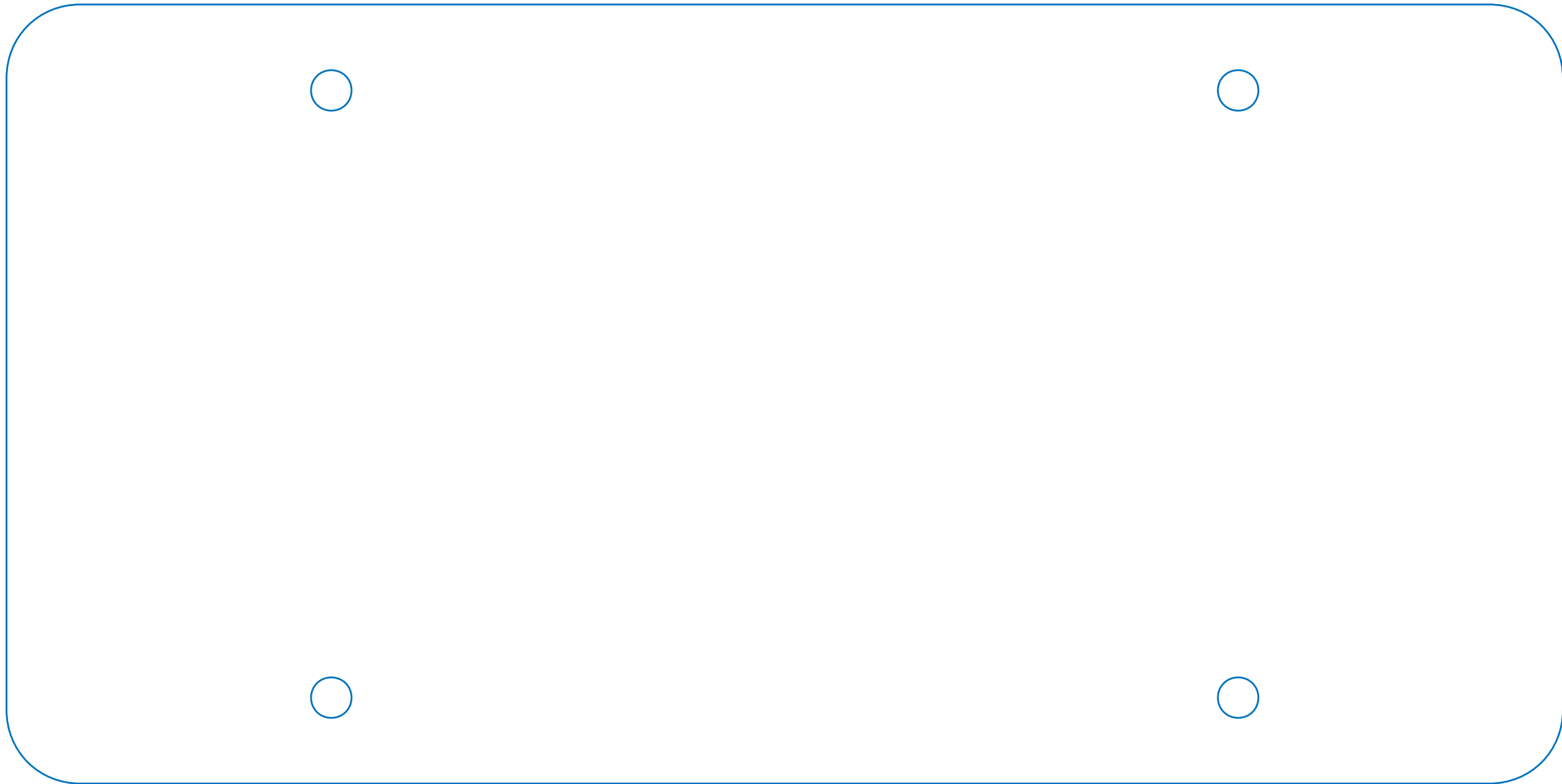
Production: 140

- PDF exported with all fonts outlined.
- Outline all fonts in Illustrator prior to production.



#4880-035 - PLASTIC CAR PLATE (0.035 GAUGE) - 12" x 6"

ROUND HOLES ALSO AVAILABLE AT ADDITIONAL CHARGE



#4880-035 - PLASTIC CAR PLATE (0.035 GAUGE) - 12" x 6"

ROUND HOLES ALSO AVAILABLE AT ADDITIONAL CHARGE